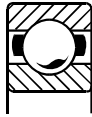


Contents



Chapter 1 **Rolling Contact Bearings**

1 - 100

1.1	Introduction	2
1.2	Types of Rolling Contact Bearings	3
1.3	Selection of Type of Bearing	8
1.4	Basic Static Load Rating Capacity	9
1.5	Approximation of C_0 by Stribeck's Equation	9
1.6	Dynamic Load Rating Capacity	13
1.7	Life of Bearings	13
1.8	Equivalent Dynamic Bearing Load	13
1.9	Equivalent Static Bearing Load	15
1.10	Load Life Relationship	15
1.11	Selection of Bearing from Manufacturer's Catalog	17
1.12	Bearing Designation	21
1.13	Solved Examples	22
1.14	Selection of Taper Roller Bearings	34

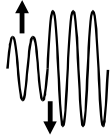
1.15	Solved Examples	37
1.16	Design for Cyclic Loads and Speeds	43
1.17	Bearings with Different Probability of Survival	45
1.18	Solved Examples	47
1.19	Lubrication of Bearings	77
1.20	Bearing Mountings	78
1.21	Preloading of Rolling Contact Bearings	81
1.22	Failures in Rolling Contact Bearings	82
1.23	Oil Seals For Shafts	86
1.24	Bearings used in Automotive IC Engines	91
1.25	Bearings Used in Wheels	92
1.26	Bearings Used in Steering	93
	Exercises	95
	Problems	96



Chapter 2 **Sliding Contact Bearings**

101 - 176

2.1	Introduction	102
2.2	Viscosity	102
2.3	Other Properties of Lubricants	106
2.4	Desirable Properties of Lubricating Oils	107
2.5	Additives	109
2.6	Greases	111
2.7	Selection of Lubricants	111
2.8	Bearing Materials	113
2.9	Modes of Lubrication	115
2.10	Hydrodynamic Lubrication - Reynold's Equation	118
2.11	Journal Bearing Performance	123
2.12	Wear and Bearing Characteristic Number	129
2.13	Parameters of Bearing Design	132
2.14	Solved Examples	137
2.15	Bearing Configurations	168
2.16	Constructional Details of Bearings and Journals	169
2.17	Comparison Of Sliding and Rolling Contact Bearings	172
	Exercises	173
	Problems	174

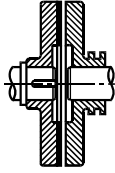


Chapter 3

Design for Fluctuating Loads

177 - 316

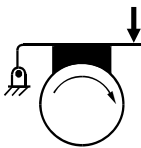
3.1	Dynamic and Fluctuating Stresses	178
3.2	Fatigue Failure and Endurance Limit	180
3.3	Factors for Correcting Endurance Limits	182
3.4	Surface Factor k_a	183
3.5	Size Factor k_b	183
3.6	Reliability Factor k_c	184
3.7	Temperature Factor k_d	184
3.8	Stress Concentration	184
3.9	Miscellaneous Effects Factor k_f	190
3.10	Fatigue Fracture Analysis	190
3.11	Design of Components Subjected to Fatigue Loading	193
3.12	Reversed Loads and Infinite Life	194
3.13	Reversed Loads and Finite Life	194
3.14	Cumulative Damage in Fatigue (Miner's Equation)	195
3.15	Solved Examples	196
3.16	Fluctuating Loads and Infinite Life	217
3.17	Soderberg Criterion	218
3.18	Goodman Criterion	219
3.19	Modified Goodman Diagram	220
3.20	Gerber Criterion	224
3.21	Fluctuating Loads and Finite Life	225
3.22	Solved Examples	226
3.23	Fatigue Design under Combined Stresses	261
3.24	Solved Examples	262
3.25	Fatigue Design of Bolted Joints	298
3.26	Fatigue Design of Helical Springs	302
3.27	Solved Examples	305
	Exercises	312
	Problems	313



Chapter 4
Friction Clutches

317 - 370

4.1	Classification of Clutches	318
4.2	Single Plate Clutches	319
4.3	Multi-plate Clutches	320
4.4	Torque Capacity of Plate Clutches	321
4.5	Optimum Diameter Ratio for Torque Transmission	325
4.6	Friction Material	326
4.7	Solved Examples	327
4.8	Cone Clutches	340
4.9	Torque Capacity of Cone Clutches	341
4.10	Solved Examples	346
4.11	Centrifugal Clutches	357
4.12	Solved Examples	359
4.13	Thermal Considerations in Clutches	362
4.14	Solved Examples	365
	Exercises	367
	Problems	367



Chapter 5
Mechanical Brakes

371 - 454

5.1	Brakes	372
5.2	Classification of Brakes	372
5.3	Energy Relations in Brakes	373
5.4	Solved Examples	374
5.5	Friction Material Linings and Pressures	383

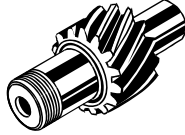
5.6	<i>Thermal Considerations in Brakes</i>	384
5.7	<i>Solved Examples</i>	385
5.8	<i>Design Considerations in Pivoted Long Shoe Brakes</i>	388
5.9	<i>Solved Examples</i>	394
5.10	<i>Internally Expanding Shoe Brake</i>	423
5.11	<i>Solved Examples</i>	429
5.12	<i>Caliper Disk Brake</i>	444
5.13	<i>Solved Examples</i>	446
5.14	<i>Parameters to Select a Right Brake</i>	448
	<i>Exercises ?</i>	449
	<i>Problems</i>	450



Chapter 6
Spur Gears

455 - 536

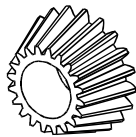
6.1	<i>Classification of Gears</i>	456
6.2	<i>Characteristics and Selection Criterion of Gears</i>	457
6.3	<i>Gear Materials</i>	459
6.4	<i>Standard Systems of Gear Tooth</i>	462
6.5	<i>Gear Tooth Failures</i>	466
6.6	<i>Gear Lubrication</i>	470
6.7	<i>Constructional Details of Spur Gears</i>	470
6.8	<i>Force Analysis of Spur Gears</i>	473
6.9	<i>Solved Examples</i>	475
6.10	<i>Beam Strength of Spur Gear (S_b)</i>	482
6.11	<i>Face Width in Spur Gears</i>	485
6.12	<i>Wear Strength of Spur Gears (S_w)</i>	485
6.13	<i>Effective Load (P_{eff}) on Spur Gear Tooth</i>	490
6.14	<i>Solved Examples</i>	495
	<i>Exercises ?</i>	534
	<i>Problems</i>	534



Chapter 7 Helical Gears

537 - 612

7.1	Helical Gear Terminology	538
7.2	Force Analysis of Helical Gears	540
7.3	Solved Examples	543
7.4	Equivalent or Virtual Number of Teeth	557
7.5	Beam Strength of Helical Gears (S_B)	559
7.6	Wear Strength of Helical Gears (S_W)	560
7.7	Effective Load (P_{eff}) on Helical Gear Tooth	562
7.8	Solved Examples	564
7.9	Constructional Details of a Gear Box	608
	Exercises ?	609
	Problems	609



Chapter 8 Bevel Gears

613 - 678

8.1	Types of Bevel Gears	614
8.2	Bevel Gear Terminology and Geometric Relationship	616
8.3	Formative or Virtual Number of Teeth	617
8.4	Force Analysis of Bevel Gears	619
8.5	Solved Examples	621
8.6	Lubrication and Mounting of Bevel Gears	630
8.7	Solved Example on Bearing Reactions	632
8.8	Beam Strength of Bevel Gears	638
8.9	Wear Strength of Bevel Gears	642
8.10	Effective Load on Gear Tooth	644
8.11	Bevel Gear Materials	646

8.12	Solved Examples	647
8.13	Gear Tooth Failures	670
8.14	Spiral Bevel Gear Geometry and Basic Relations	671
8.15	Hypoid Gears	674
	Exercises ?	674
	Problems	675



Chapter 9
Worm Gears

679 - 754

9.1	Types of Worm Gears	680
9.2	Worm and Worm Gear Terminology	681
9.3	Tooth Proportions of Involute Worm and Worm Wheel	683
9.4	Force Analysis of Worm Wheel Drives	683
9.5	Deflection of Worm Shaft due to Lateral Forces	687
9.6	Efficiency of Worm Drives	688
9.7	Solved Examples	691
9.8	Mounting of Worm Gears	698
9.9	Lubrication in Worm Gears	701
9.10	Solved Example	702
9.11	Failure and Design Criterion for Worm Gears	706
9.12	Worm gear Strength Rating Based on IS 7443	706
9.13	Worm Gear Wear Rating Based on IS 7443	710
9.14	Heat Rating for Worm Gears	714
9.15	Thermal Considerations in Worm Gear Drive	714
9.16	Solved Examples	716
9.17	Beam Strength of Worm Gears	734
9.18	Wear Strength of Worm Gears	735
9.19	Solved Examples	736
	Exercises ?	750
	Problems	751



Appendix

i - xiv

A1. *Theoretical Stress Concentration Charts* *ii*
A2. *Materials and Their Properties* *viii*
 A2-1 : *Physical Constants of Typical Materials* *viii*
 A2-2 : *Properties of Cast Iron* *ix*
 A2-3 : *Properties and Applications of Typical Steels* *ix*
 A2-4 : *Properties of Stainless and Heat Resistant Steels* *x*
 A2-5 : *Properties of General Use Cast Steels* *xii*
 A2-6 : *Properties of High Tensile Cast Steels* *xii*
 A2-7 : *Properties and Typical Uses of*
 Aluminium Wrought Alloys *xii*
 A2-8 : *Properties and Typical Uses of*
 Aluminium Cast Alloys *xiii*
 A2-9 : *Typical Copper Alloys and their Applications* *xiv*
 A2-10 : *Physical Properties of Brass* *xiv*



Alphabetical Index

xv - xxii